

Geography

Part Two: How and Why is the Territory Developing

Chapter 4: Development in Response to Inequalities

Key ideas

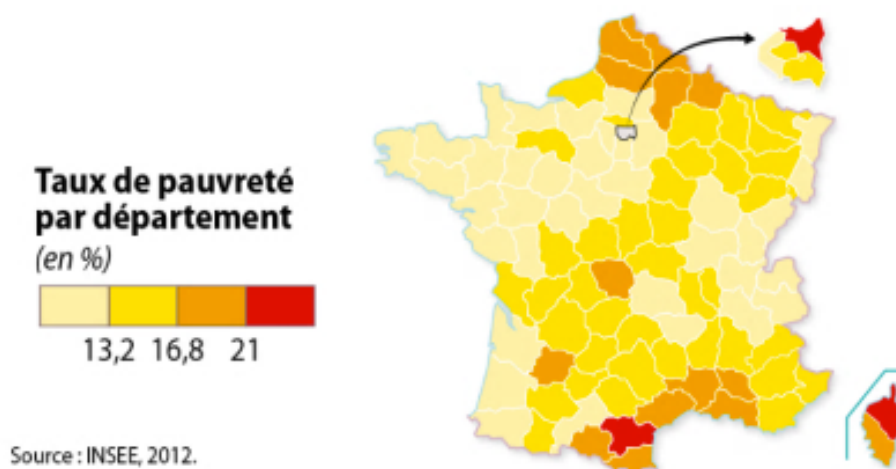
This chapter is about how places in France are being improved or renovated in order to reduce inequalities. Fourteen large cities in France currently account for the majority of improvement projects in the country. These are carried out by **public actors** (such as the State, Regions, Communes or European Union) and **private actors** (businesses).

Artist's impression of the new university campus in Nancy



This is an impression of the Artem campus of three higher education institutes at Nancy which will be opened in 2017. The aim of this project is to revitalise the town centre.

Poverty Rate, department by department (in %)



Case Study: The Louvre-Lens Museum

At the start of the 21st century, the State announced its intention to decentralise certain Parisian cultural developments to the regions. Lens, situated in the heart of a former mining region, was chosen to host an annex of the Louvre museum.

1. Information panel in Lens, 2009: 'Our eyes are now open towards other horizons'.



2. Further projects announced around the Louvre-Lens

The opening of the Louvre-Lens has stimulated other developments such as:

- a hotel on the former site of the Apollo cinema
- 13 800 m² of offices and apartments near to the station

3. Lens: a town in crisis

	Lens (2012)	Nord-Pas de Calais (2015)
Nombre d'habitants	32 663	4,05 millions
Chômage	27 %	12,9 %
Taux de pauvreté	31 %	19 %
Taux de non-diplômés	27 %	25 %

2

Une ville en crise

Source : INSEE.

Translations

Number of inhabitants

Unemployment

Level of poverty

Proportion of people without qualifications

4. Oblique aerial photograph of Lens

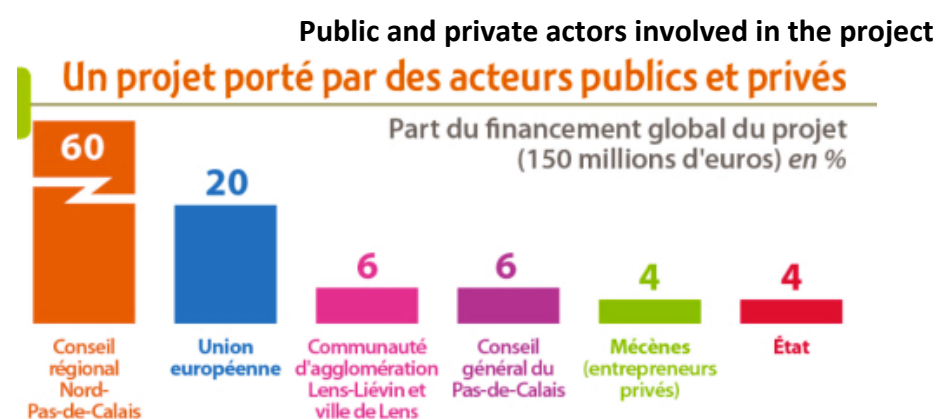


Legend

- 1. Louvre- Lens
- 2. Base (cultural centre, economic pole) and slag heaps (**terrils**) which have been classified as UNESCO heritage site
- 3. University Institute of Technology
- 4. Mining City
- (dotted red line) railway
- (unbroken red line) A21

5. The different actors of the Louvre-Lens Museum

The museum opened its doors in 2012 and by the end of 2014 it had welcomed more than 1 million visitors from the Nord-Pas-de-Calais region, France and Europe.



Source : Missionbassinminier.org / Louvre-Lens, Chiffres clés et impacts 2014.

Translations

Regional Council / European Union / Lens-Liévin community agglomeration
Mécènes (private company) / State

Case Study: Centre Parks at Roybon



In 2008, Centre Parks Europe, announced plans to construct a Holiday village close to the commune of Roybon (Isère, 1 700 inhabitants). work began in 2014 with a planned delivery date of 2017. However, work was interrupted in 2015 due to a legal challenge to preserve natural protected places.

1. A Contested Development



The Chambaran forest, next to Roybon, has been occupied by protestors against the Centre Parks project.

2. Protest March in support of the project by local inhabitants, in December 2014.

